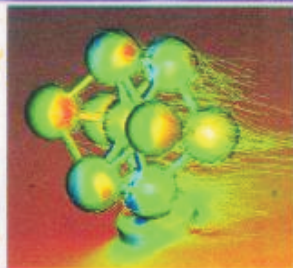
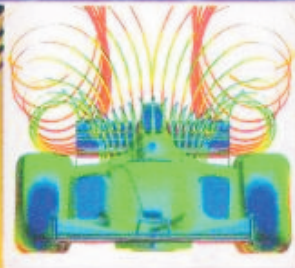


Fluid Mechanics and Hydraulic Machines



S.C. Sharma

KHANNA PUBLISHERS

Fluid Mechanics & Hydraulic Machines

T.R. Banga, F.I.E.
Formerly Principal,
Govt. Polytechnic, Alwar (Rajasthan)

S.C. Sharma, MIE, MIMA
Formerly, Lecturer in Mech. Engg.
&
Formerly General Manager, THDC Ltd.



KHANNA PUBLISHERS

Operational Office

B-35/9, G.T. Karnal Road, Industrial Area,
(Near Telephone Exchange), Delhi-110033
Phones : 011-27224179 • Mob. 09811541460
email : contactus@khannapublishers.in

Published by :

Romesh Chander Khanna & Vineet Khanna
for **KHANNA PUBLISHERS**
2-B, Nath Market, Nai Sarak
Delhi- 110 006 (India)

Website : www.khannapublishers.in

© 1979 and onward

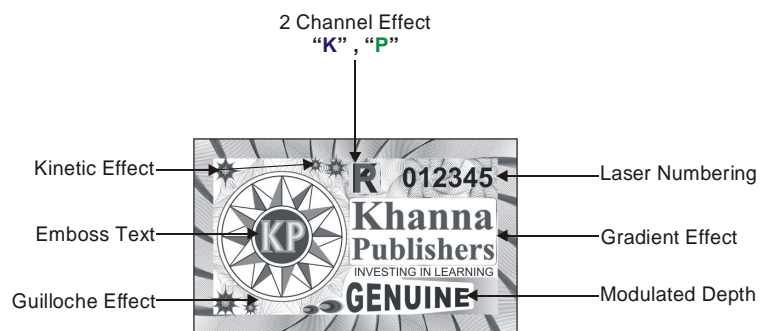
This book or part thereof cannot be translated or reproduced in any form without the written permission of the Authors and the Publishers. The right to translation, however, reserved with the author alone.

Copyright: Author and Publishers Jointly

Hologram & Description

To all readers of our books, from yourself if being defrauded by pirates to prevent, please make sure that there is an Hologram on the cover of our books with the below specifications. If you find any book without Hologram and Description, please mail us at contactus@khannapublishers.in

Thanking you



ISBN No. 978-81-7409-277-9

First Edition : 1995

Eighth Edition : 2014

Preface to the Eighth Edition

Due to clubbing of the subjects “Fluid Mechanics” and “Hydraulic Machines” in one paper by various universities, there had been demands of adding “Fluid Mechanics” with our present book “Hydraulic Machines”. In view of this, the book now covers Fluid Mechanics, Hydraulics and Hydraulic Machines.

In this edition, efforts have been made to present the text in a simple and lucid manner which can be understood by the students without any difficulty. The book contains a large number of solved examples to help the students to understand the subject easily.

The book is now in two parts, Part—I deals with Fluid Mechanics and Hydraulics, and the Part—II covers Hydraulic Machines and Hydraulic Systems. The Part II after thorough revision, also covers the syllabuses of “Fluid Power Engineering”, “Hydro-power Engineering” and “Water Power Engineering” as named by different universities. This single book now expected to cover the needs of the engineering students of all the branches on the subject. The book will also be useful for the students appearing in the competitive examinations including engineering services examination conducted by UPSC.

Suggestions from the readers for the improvement of the book will be appreciated.

—Authors

Other related books by the authors

1. Industrial Engineering and Management including Production Management by *Banga and Sharma*
2. Industrial Organisation and Engineering Economics by *Banga and Sharma*
3. Quality Management and Reliability by *S.C. Sharma*
4. Mechanical Engineering Handbook by *Banga, Sharma and Manghnani*
5. Plant Layout and Materials Handling by *S.C. Sharma*
6. Materials Management and Materials Handling by *S.C. Sharma*
7. Mechanical Estimating Costing including Contracting by *Banga and Sharma*
8. Power Plant Engineering by *G.R. Nagpal and S.C. Sharma*
9. Safety, Occupational, Health and Environmental Management in Construction by *S.C. Sharma and Vinit Kumar*

Contents

PART I — FLUID MECHANICS

1. Properties of Fluids	3—20
1.1. Introduction	3
1.2. Classification of Fluid Mechanics	4
1.3. Units of Measurement	5
1.4. Properties of Liquids.	6
1.5. Density	6
1.6. Specific Weight and Specific Volume	7
1.7. Specific Gravity	7
1.8. Compressibility	7
1.9. Surface Tension	8
1.10. Capillarity	8
1.11. Viscosity	9
1.12. Pressure and Vapour Pressure	9
1.13. List of Important Symbols	10
1.14. Units of Measurements	12
1.13.1 Units and Symbols of Physical Quantities: (IS : 1890-1961 and IS : 3616-1961)	12
1.13.2. Conversion Tables	16
Solved Examples	
Exercise	
2. Fluid Pressure and Its Measurement	21—47
2.1. Fluid Pressure at A Point	21
2.2. Pascal's Law	21
2.3. Pressure Head of A Liquid	22
2.4. Atmospheric, Absolute, Gauge and Vacuum Pressures.	23
2.5. Measurement of Pressure	24
2.6. Piezometer Tube	25
2.7. Manometers	25
2.7.1 Simple U-tube Manometer	25
2.7.2 Micro-manometer	27
2.7.3 Differential Manometer	28
2.8. Mechanical Gauges	32
2.8.1 Bourdon's Tube Pressure Gauge	32
2.8.2 Diaphragm Pressure Gauge	32
2.8.3 Dead Weight Pressure Gauge	33
Solved Examples	
Exercise	
3. Hydrostatics and Buoyancy	48—102
Part A — Hydrostatics	
3.1. Introduction	48
3.2. Total Pressure on An Immersed Surface	48
3.2.1 Total Pressure on Immersed Horizontal Surface	48

3.2.2 Total Pressure on Vertically Drowned Surface or Area	49
3.2.3 Total Pressure on An Inclined Surface	50
3.3. Centre of Pressure	51
3.3.1 Centre of Pressure of A Vertically Immersed Area	51
3.3.2 Centre of Pressure of An Inclined Immersed Surface or Area	53
3.4. Point of Application of Forces on Hydraulic Structures	55
3.5. Gates	55
3.5.1 Sluice Gates	55
3.5.2 Lock Gates	56
3.6. Masonry Walls	59
3.7. Dams	60
Solved Examples	61
Part-B—Buoyancy	
3.8. Introduction	81
3.9. Principle of Archimedes	81
3.10. Centre of Buoyancy	82
3.11. Resultant Upward Pressure When the Body Floats at the Interface of Two Fluids	82
3.12. Metacentre and Metacentric Height	83
3.13. Conditions of Equilibrium of Floating Bodies	84
3.14. Determination of the Metacentric Height	84
3.14.1. Analytical Method	84
3.14.2. Experimental Method	86
3.15. Transverse Oscillation of A Floating Body	87
Solved Examples	89
Exercise	
4. Fluid Flow (Kinematics and Dynamics)	103—133
4.1. Introduction	103
4.2. Types of Flow of Fluids	104
4.3. Flow Lines	105
4.4. Basic Principles of Fluid Flow	106
4.5. Equation of Continuity of Flow	106
4.6. Energies of Flowing Liquids	107
4.7. Bernoulli's Theorem	110
4.8. Euler's Equation of Motion	112
4.9. Practical Applications of Bernoulli's Equation	114
4.10. Venturi Meter	114
4.11. Pitot-tube	117
4.12. Orifice Meter	118
Solved Examples	118
Exercise	
5. Flow Through Orifices and Mouthpieces	134—184
Part A—Orifices	
5.1. Introduction	134
5.2. Classification of Orifices	135
5.3. Definitions	135
5.4. Hydraulic Co-efficients	135
5.5. Determination of Hydraulic Co-efficients in the Laboratory	137

5.5.1 The Co-efficient of Velocity (C_v)	137
5.5.2 The Co-efficient of Discharge (C_d)	138
5.5.3 The Co-efficient of Contraction (C_c)	138
5.6. Discharge through Large Vertical Rectangular Orifices	139
5.7. Drowned or Submerged Orifices	139
5.7.1 Totally Submerged Orifice	140
5.7.2 Partially Drowned Orifice	140
5.8. Time for Emptying Vessels of Various Types	141
5.8.1 Vessel of Uniform Section	141
5.8.2 Time of Emptying Hemispherical Vessel	142
5.9. Flow of Liquid through An Orifice Under Pressure	143
Part B — Mouth Pieces	
5.10. Introduction	153
5.11. Energy or Head Losses of Flowing Liquido	154
5.12. Orifice Meter	160
5.13. Types of Mouthpieces	161
5.13.1 External Mouthpieces	161
5.13.2 Internal or Re-entrant or Borda's Mouthpiece	166
Solved Examples	169
Exercise	
6. Flow Over Notches and Weirs	185—227
Part A — Notches	
6.1. Introduction	185
6.2. Types of Notches	186
6.3. Rectangular Notch	186
6.3.1 Calibration of Rectangular Notch	187
6.3.2. Effect of Error in the Measurement of Head on the Discharge	188
6.4. Triangular Notch (V-notch)	189
6.4.1 Comparison Between Triangular Notch and Rectangular Notch	190
6.4.2 Effect of Error in the Measurement of Head on the Discharge	191
6.5. Trapezoidal Notch	191
6.6. Cippoletti Notch	192
6.7. Stepped Notch	192
6.8. Time Taken by a Rectangular Notch in Emptying A Tank	193
6.9. Time Taken by a Triangular Notch in Emptying A Tank	194
Part B — Weirs	
6.10. Introduction	204
6.11. Types of Weirs	205
6.12. Rectangular Weir	205
6.12.1 Francis' Formula for Rectangular Weirs	206
6.12.2 Bazin's Formula for Rectangular Weirs	207
6.13. Cippoletti Weir	208
6.14. Velocity of Approach	209
6.15. Ogee Weir	210
6.16. Suppressed Weir	211
6.17. Weir With End Contractions	211

6.18. Anicut	211
6.19. Siphon Spillway	211
6.20. Water Fall	212
6.21. Ventilation of Weirs	213
Solved Examples	214
Exercise	
7. Flow through Pipes — I	228—250
7.1. Introduction	228
7.2. Laminar (or Viscous) Flow	229
7.3. Viscosity	229
7.4. Kinematic Viscosity	230
7.5. Effect of Temperature on Viscosity	233
7.6. Effect of Pressure on Viscosity	234
7.7. Laminar Flow in Circular Pipes	234
7.8. Turbulent Flow	237
7.9. Turbulent Flow in Pipes	238
7.10. Nature of Turbulent Flow in Pipes	239
7.11. Velocity Distribution in Smooth Pipes	241
7.12. Velocity Distribution in Rough Pipes	241
7.13. Froude's Experiment—Laws of Fluid Friction	242
Solved Examples	243
Exercise	
8. Flow Through Pipes—II	251—307
8.1. Loss of Energy (or Head) in Pipes	251
8.2. Major Energy Losses	251
8.2.1. Darcy-weisbach Equation for Loss of Head in Pipes	251
8.2.2. Chezy's Formula	253
8.3. Minor Losses	254
8.4. Hydraulic Gradient and Total Energy Line	255
8.5. Flow through Syphon Pipes	256
8.6. Forked Pipe or Pipes in Parallel	257
8.7. Flow through A Bye-pass or Diversion	258
8.8. Pipes in Series or Compound Pipe	259
8.9. Equivalent Pipe	260
8.10. Flow through A Tapering Pipe	261
8.11. Time of Emptying Reservoir through A Long Pipe	263
8.12. Time of Flow from one Reservoir into Another through a Long Pipe	264
8.13. Transmission of Power through Pipes	266
8.14. Flow of Liquids through Nozzles	267
8.15. Water Hammer in Pipes	270
8.15.1 Gradual Closure of Valve	270
8.15.2. Sudden Closure of Valve	271
8.15.3. Rise in Pressure Due to Sudden Closure	272
8.16. Pipe Networks	274
Solved Examples	276
Exercise	

9. Forces on Immersed Bodies and Boundary Layer Theory	308—339
9.1. Introduction	308
9.2. Flow Past A Submerged Body—Lift and Drag	308
9.3. Classification of Drag	311
9.4. Unstreamlined (Bluff) and Streamlined Bodies	312
9.5. Drag and Lift Co-efficients	313
9.6. Dimensional Analysis of Drag and Lift	313
9.7. Drag on A Sphere	314
9.8. The Airfoil—Lift and Drag	315
9.9. The Boundary layer Theory	317
9.10. The Boundary layer Separation	318
9.11. Laminar and Turbulent Boundary Layer	320
9.12. Thickness of Boundary Layer	321
9.12.1. Momentum Thickness	322
9.12.2. Energy Thickness	322
9.13. Laws of Velocity Distribution	322
9.14. Momentum Equation	323
9.15. Laminar Boundary Layer on A Smooth Flat Plate	324
9.16. Turbulent Boundary Layer on A Flat Plate	326
9.17. Methods of Controlling Boundary Layer	328
Solved Examples	330
Exercise	
10. Flow Through Open Channels	340—397
10.1. Introduction	340
10.2. Classification of Channels	340
10.3. Classification of Flow	342
10.4. Formulae for Uniform Flow	343
10.4.1. Chezy's Formula	343
10.4.2. Chezy's Constant	345
10.4.3. Bazin's Formula.	345
10.4.4. Kutter's Formula	346
10.4.5. Manning's Formula	347
10.5. Channel of Circular Cross-section	347
10.6. Condition for Most Efficient Cross-sections	348
10.6.1. Rectangular Section—Condition for Maximum Discharge	348
10.6.2. Condition for Most Economical Section of A Trapezoidal Channel	349
10.6.3. Circular Section	351
10.7. Current Meter	354
10.7.1. Rating or Calibration of Current Meters	355
10.7.2. Comparison Between the Cup and Propeller Types of Current Meters	356
10.8. Methods of Measuring the Discharge of a River	356
10.9. Non-Uniform Flow	358
10.10. Hydraulic Jump	358
10.10.1. Location of Hydraulic Jump	359
10.10.2. Types of Hydraulic Jump	359
10.10.3. Height of Hydraulic Jump in Horizontal Channels of Rectangular Cross Section	360
10.10.4. Length of Hydraulic Jump	362
10.11. Gradually Varied Flow (G.V.F.)	362

10.11.1. Classification of Surface Profiles in Gradually Varied Flow	363
10.11.2. Description of Surface Profiles	363
Solved Examples	367
Exercise	
11. Dimensional and Model Analysis	398—430
11.1. Introduction	398
11.2. Fundamental Dimensions	399
11.3. Methods of Dimensional Analysis	400
11.3.1. Rayleigh's Method	400
11.3.2. Buckingham π Theorem Method	401
11.4. Model Analysis	402
11.5. Similitude—Types of Similarities	403
11.5.1. Geometric Similarity	403
11.5.2. Kinematic Similarity	403
11.5.3. Dynamic Similarity	404
11.6. Advantages of Dimensional and Model Analysis	405
Solved Examples	405
Exercise	

PART II — HYDRAULIC MACHINES

1. Introduction to Hydraulic Machines	3—5
1.1. Introduction	3
1.2. Classification	3
1.3. Turbomachines or Rotodynamic Machines	3
1.4. Positive Displacement Machines	5
1.5. Other Lifting Devices	5
1.6. Fluid System	5
2. Reciprocating Pumps	6—44
2.1. Introduction	6
2.2. Reciprocating Pumps —Construction and Working	7
2.3. Classification of Reciprocating Pumps	8
2.4. Discharge, Work done and Power by Pumps	8
2.5. Bucket (hand) Pump	10
2.6. Plunger pump	11
2.7. Rate of delivery	11
2.8. Multi-Cylinder Pumps	12
2.9. Coefficient of Discharge and Slip	13
2.9.1. Slip	13
2.9.2. Negative Slip	13
2.10. Indicator Diagram	14
2.11. Acceleration Head	15
2.12. Effect of Acceleration Head	16
2.13. Effects of Friction in Pipes	20
2.14. Air Vessel	23
2.14.1. Work done when Air Vessel is Fitted	24
2.14.2. Power required for the Pump	26
2.14.3. Work saved by Air Vessel	26
2.15. Operating Characteristic Curves (OC Curves)	27
2.16. Other types of Reciprocating Pumps	41

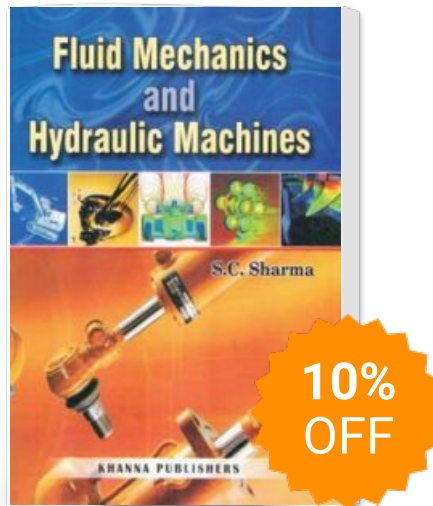
3. Impact of Jet	45—77
3.1. Introduction	45
3.2. Pressure on Stationary Flat Plate	45
3.3. Pressure on Moving Flat Plate	48
3.4. Pressure on a Fixed Curved Vane	50
3.5. Pressure on a Moving Curved Vane	51
3.6. Flow over a Radial Vane	60
3.7. Reaction of Jet and Jet Propulsion	68
3.7.1. Jet Propulsion of a Tank	68
3.7.2. Jet Propulsion of Marine Craft by Water Jets	69
3.8. Rocket Propulsion	75
3.9. Jet engines	75
4. Water Wheels	78—83
4.1. Introduction	78
4.2. Types of Water Wheels	78
4.2.1. Overshot Water Wheel	79
4.2.2. Breast Water Wheel	79
4.2.3. Undershot or Impulse Water Wheel	79
4.2.4. Sagebien Water Wheel	80
4.2.5. Poncelet Water Wheel	81
4.2.6. Jet Reaction Water Wheel	81
4.3. Advantages and Disadvantages of Water Wheels.	82
5. Hydro-electric Plants	84—120
5.1. Introduction	84
5.2. Sources of Energy	84
5.3. Generation Mix and Place of Hydro-power in a Power System	85
5.4. Non-conventional Energy Sources	86
5.5. Important Hydro-electric Installations in India	89
5.6. Advantages and Disadvantages of Hydroelectric Plants	90
5.7. Classification of Hydro-power Plants	91
5.8. Selection of Site	94
5.9. Essential Components of Hydro-electric Plant	94
5.9.1. Storage Reservoir	95
5.9.2. Dam	96
5.9.3. Water Ways	97
5.9.4. Surge Tank	100
5.9.5. Power House	101
5.9.6. Tail Race	102
5.9.7. Transmission of Electrical Power	102
5.10. Base Load and Peak Load Plants	102
5.11. Classification of Water Turbines	103
5.12. Combined Operation of Different Power Plants.	104
5.13. Pump Storage Plants. (PSPs)	105
5.13.1. Method for meeting Peak Power Demands	106
5.14. Small Hydro-Power Projects	108
5.15. Gates and Valves (Hydro-mechanical Equipments)	108
5.15.1. Gates	108
5.15.2. Sluice (Gates) Valves	110
5.16. Electrical Equipment	111
5.17. Mechanical Equipment	112
5.18. Controls in Hydel-Power Station	113

5.19. Control Room	114
5.20. Hydro power and Sustainable Development (Environmental Aspects)	115
5.20.1. Role of Hydro-Power for Development	116
5.20.2. Contribution of Hydro-power Scheme towards Sustainability Features	117
5.20.3. Environmental Issues and Mitigation Measures	118
6. Hydraulic Turbines—Impulse Turbines	121—148
6.1. Hydraulic Turbines	121
6.2. Classification of Turbines	122
6.3. Impulse Turbine—Pelton Wheel (Turbine)	123
6.4. Main Components of Pelton Wheel	124
6.5. Work Done by Pelton Wheel	125
6.6. Number of Buckets for Pelton Wheel	127
6.7. Empirical Relations for Number of Buckets	128
6.8. Efficiencies of Pelton Wheel	129
6.9. Early types of Impulse Turbines	140
7. Reaction Turbines—I (Francis Turbines)	149—170
7.1. Introduction	149
7.2. Classification	150
7.3. Francis Turbine	152
7.4. Main Components of a Francis Turbine	153
7.5. Discharge of the Turbine	154
7.6. Work done	155
7.7. Efficiencies of Reaction Turbine	155
7.8. Working Proportions of Francis Turbine	156
8. Reaction Turbine—II (Axial Flow Turbines)	171—185
8.1. Introduction	171
8.2. Propeller Turbine	171
8.3. Kaplan Turbine	172
8.4. Discharge through Kaplan Turbine	173
8.5. Working Proportions	173
8.6. Important Points for Propeller/Kaplan Turbines	173
8.7. Propeller Turbine versus Kaplan Turbine	174
8.8. Tubular (or Bulb) Turbine	174
8.9. Deriaz or Diagonal Turbine	175
8.10. Comparison between Impulse and Reaction Turbines	176
9. Draft Tubes	186—196
9.1. Introduction	186
9.2. Functions of Draft Tube	186
9.3. Efficiency of Draft Tube	187
9.4. Draft Tube Theory	187
9.5. Types of Draft Tubes	188
9.6. Cavitation in Turbines	189
9.7. Cavitation Prevention	191
9.8. Effects of Cavitation	192
10. Governing of Turbines	197—208
10.1. Introduction	197
10.2. Main Components of Oil Pressure Governor	198
10.3. Governing of Pelton Wheel	199

10.3.1. Guide Mechanism	199
10.3.2. Working	200
10.4. Governing of Francis Turbine	202
10.5. Governing of Kaplan Turbine	202
10.6. Qualities of a Governor	203
10.7. Flywheel	204
10.8. Safety Devices for Penstocks	204
10.9. Pressure Regulator or Relief Valve	205
10.10. Surge Tank	205
10.11. Air Inlet Valve	207
11. Turbine Performance and Selection	209—233
11.1. Introduction	209
11.2. Turbine Model	209
11.3. Specific Speed	210
11.4. Working Conditions of Geometrically Similar Turbines	212
11.5. Turbine Performance	217
11.6. Characteristic Curves	218
11.7. Selection of Turbines	225
12. Centrifugal Pumps	234—289
12.1. Introduction	234
12.2. Component Parts	235
12.3. Working of Centrifugal Pump	238
12.4. Mining Pumps	239
12.5. Non-Clog Pumps	239
12.6. Classification of Centrifugal Pumps	239
12.7. Priming	243
12.8. Multi-stage Pumps	245
12.9. Work Done by Impeller on Water	246
12.10. Net Positive Suction Head (N.P.S.H.)	248
12.11. Manometric Head	248
12.12. Pump Losses	250
12.13. Pump Efficiencies	250
12.14. Minimum Starting Speed of a Pump	251
12.15. Minimum Diameter of Impeller	252
12.16. Number of Blades	253
12.17. Axial Thrust	253
12.18. Cavitation and its Prevention	253
12.19. Comparison with Reciprocating Pump	253
12.20. Application of Centrifugal Pumps	254
12.21. Specific Speed of a Centrifugal Pump	263
12.22. Similar Pumps and Model Testing	265
12.23. Characteristic Curves of a Centrifugal Pump	266
12.24. Data for Purchasing a Pump (Selection of a Pump)	269
12.25. Pump Troubles and Remedies	270
12.26. Axial Flow or Propeller Pump	272
13. Miscellaneous Types of Pumps	290—300
13.1. Introduction	290
13.2. Hydro-dynamic Pumps	291
13.3. Deep Well or Borehole Pumps	291
13.4. Submersible Pumps	291

13.5. Chemical and Process Pumps	293
13.6. Positive Displacement Pumps	294
13.7. Rotary Pumps	294
13.7.1. Gear Pumps	294
13.7.2. Screw Pumps	296
13.7.3. Vane Pumps	297
13.8. Air Lift Pumps	297
13.9. Cooling Water Pumps	298
13.10. Jet Pumps	299
13.11. Steam Injector Pumps	300
14. Hydraulic Systems (Devices)	301—337
14.1. Introduction	301
14.2. Hydraulic Jack	302
14.3. Hydraulic Crane	304
14.4. Hydraulic Intensifier	307
14.5. Hydraulic Lift	310
14.6. Hydraulic Press	313
14.7. Hydraulic Accumulator	319
14.8. Hydraulic Ram (Hydram)	327
14.9. Hydro Kinetic Systems	330
14.10. Fluid (Hydraulic) Coupling	330
14.11. Fluid (Hydraulic) Torque Converter	331
14.12. Hydraulic Brake System	333
14.13. Fluid Drives for Machine Tools	335
14.14. Hydraulic Joints and Packing	336
15. Hydro-Power Plant Economics	338—356
15.1. Introduction	338
15.2. Elements of Costs	338
15.3. Production Cost	339
15.4. Economics for Hydro-power Plants	346
15.4.1. Selection of Equipment	346
15.4.2. Selection of Location for a Dam	346
15.4.3. Assessment of Available Power	347
15.4.4. Economics of Power Generation	347
15.4.5. Installation of Power Plant	348
15.5. Estimation of Load	349
15.6. Storage and Pondage	352
15.7. Load Sharing of Hydroelectric Plants	355
16. Control Systems	357—367
16.1. Introduction	357
16.2. Functions of Control Systems	357
16.3. Components of Hydraulic System	358
16.4. Hydraulic Control Valves	359
16.4.1. Directional Control Valves	359
16.4.2. Pressure Control Valves	360
16.4.3. Flow Control Valves	361
16.4.4. Pressure Switches (Electrically Operated)	362
16.5. Types of Control Systems	362
16.6. Control Methods	364
16.7. Automatic Control	364
16.8. Applications of Automatic Control Systems	365
16.8.1. Governing of Turbine	365

Fluid Mechanics & Hydraulic Machines



Publisher : KHANNA PUBLISHERS

ISBN : 9788174092779

Author : S. C. Sharma

Type the URL : <https://www.kopykitab.com/product/40281>



Get this eBook